

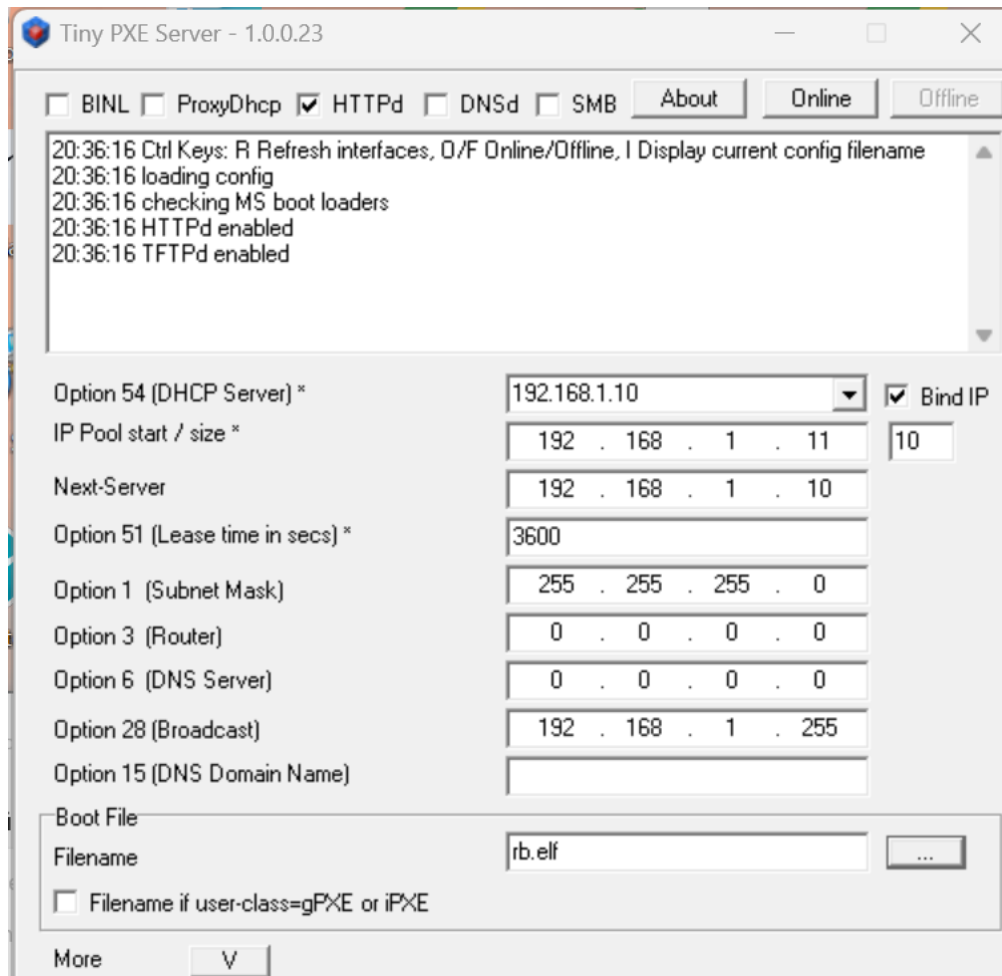
## Default Mikrotik

MAC Address	IP Address	Identity	Version	Board	Uptime
D4:CA:6D:FE:BB:70	192.168.88.1	MikroTik	6.35.4 (stable)	RB911G-5HPnD	01:59:01

## My Settings PC

IP-Zuweisung:	Manuell	
IPv4-Adresse:	192.168.1.10	<a href="#">Bearbeiten</a>
IPv4-Maske:	255.255.255.0	
DNS-Serverzuweisung:	Automatisch (DHCP)	<a href="#">Bearbeiten</a>
Verbindungsgeschwindigkeit (Empfang/Übertragung):	100/100 (Mbps)	<a href="#">Kopieren</a>
IPv4-Adresse:	192.168.1.10	
Primäres DNS-Suffix:	local.mesh	
Suchliste für DNS-Suffix:	local.mesh	
Hersteller:	Realtek	
Beschreibung:	Realtek PCIe GbE Family Controller	
Treiberversion:	1.0.0.14	
Physische Adresse (MAC):	08-97-98-CE-DD-55	

## My boot setting PXE



Transfer AREDN software

20:39:59 DHCPc:discovering for another DHCPd on LAN

20:39:59 ROOT=C:\Users\uleim\OneDrive\Dokumente\Amateurfunk\AREDN\PXE-  
SeRVR\pxesrv\files\

20:39:59 DHCPd 192.168.1.10:67 started...

20:39:59 TFTPd 192.168.1.10:69 started...

20:39:59 HTTPd:80 started...

20:39:59 DHCPd:DISCOVER received, MAC:30-38-32-31-39-35, XID:FFFFFFFF

20:39:59 DHCPd:OFFER sent, IP:192.168.1.11, XID:FFFFFFFF

20:40:04 DHCPc:another DHCPd detected on your LAN @ 192.168.1.10

20:40:04 DHCPc:it is recommended that you enable ProxyDHCP

PXE  
online

20:40:31 DHCPd:REQUEST received, MAC:D4-CA-6D-FE-BB-70, XID:31A5E270

20:40:31 DHCPd:BOOTP REQUEST

mikrotik  
einschalten  
mit reset

20:40:31 DHCPd:ACK sent, IP:192.168.1.21, XID:31A5E270

20:40:31 TFTPd:DoReadFile:rb.elf B:1452 T:0

20:40:50 TFTPd stopped...

20:40:50 DHCPd stopped...

20:40:50 HTTPd stopped...

rest lösen  
Offline

Wait 5 minutes to 60 min

```
Microsoft Windows [Version 10.0.22631.3737]
(c) Microsoft Corporation. Alle Rechte vorbehalten.

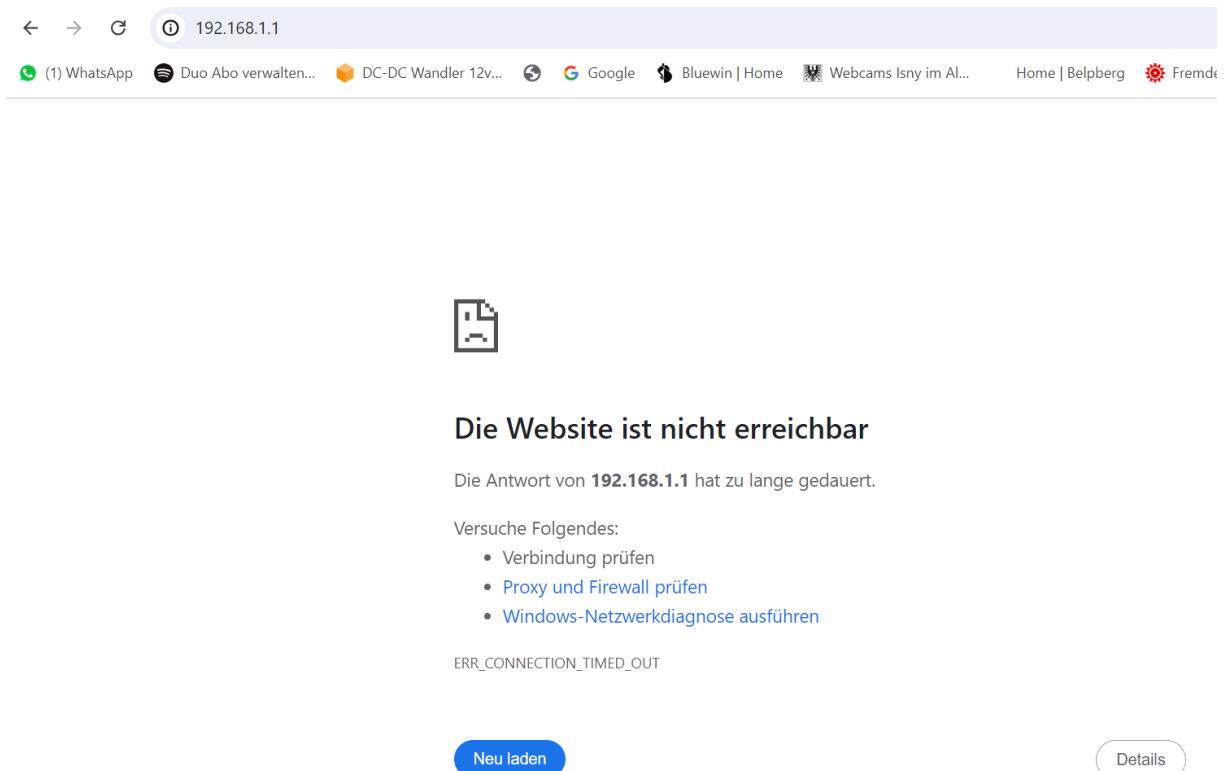
C:\Users\uleim>ping 192.168.1.1

Ping wird ausgeführt für 192.168.1.1 mit 32 Bytes Daten:
Antwort von 192.168.1.10: Zielhost nicht erreichbar.
Antwort von 192.168.1.10: Zielhost nicht erreichbar.
Antwort von 192.168.1.10: Zielhost nicht erreichbar.
Antwort von 192.168.1.10: Zielhost nicht erreichbar.

Ping-Statistik für 192.168.1.1:
    Pakete: Gesendet = 4, Empfangen = 4, Verloren = 0
    (0% Verlust),

C:\Users\uleim>
```

## WEB Test



The screenshot shows a web browser window with the address bar containing "192.168.1.1". The browser's taskbar at the top shows several open tabs: "(1) WhatsApp", "Duo Abo verwalten...", "DC-DC Wandler 12v...", "Google", "Bluewin | Home", "Webcams Isny im Al...", "Home | Belpberg", and "Fremde". The main content area of the browser displays a large error message: "Die Website ist nicht erreichbar" (The website is not reachable). Below this, it states "Die Antwort von 192.168.1.1 hat zu lange gedauert." (The response from 192.168.1.1 took too long). It then lists suggestions for troubleshooting: "Versuche Folgendes:" followed by "Verbindung prüfen", "Proxy und Firewall prüfen", and "Windows-Netzwerkdiagnose ausführen". At the bottom, the error code "ERR\_CONNECTION\_TIMED\_OUT" is visible. Two buttons are present: "Neu laden" (Reload) and "Details".

# IP Scanner

